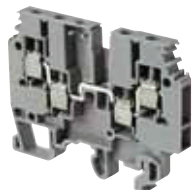


Terminals & connectors

SNA feed through terminal blocks



Feed Through Terminal Blocks 4.0mm²

Type	Description	Product Hierarchy 300002 Order Code
M4/6	4.0mm² feed through terminal (Grey)	1SNA115116R0700
M4/6	4.0mm² feed through terminal (Blue)	1SNA125116R0100
M4/6.P	4.0mm² feed through terminal, Ground screws onto din rail (Green/Yellow)	1SNA165113R1600
D4/6.P	4.0mm² feed through terminal, Ground snaps onto din rail (Green/Yellow)	1SNA165809R0100
M4/6	4.0mm² feed through terminal (Green)	1SNA105001R2700
M4/6	4.0mm² feed through terminal (Orange)	1SNA105002R2000
M4/6	4.0mm² feed through terminal (Black)	1SNA105031R1400
M4/6	4.0mm² feed through terminal (Red)	1SNA105032R1500
M4/6	4.0mm² feed through terminal (White)	1SNA105051R2000
M4/6	4.0mm² feed through terminal (Yellow)	1SNA105116R1600
M4/6	4.0mm² feed through terminal (Brown)	1SNA105209R1400
M4/6 V0	4.0mm² feed through terminal (Beige) V0	1SNA195116R0000
M4/6.1	4.0mm² feed through terminal with partition (Grey)	1SNA115259R0600
M4/6.C	4.0mm² feed through terminal with partition and 2.5mm dia. test socket (Grey)	1SNA115208R0400
M4/6.3A	4.0mm² feed through terminal (3 screw clamps) (Grey)	1SNA115468R2000
M4/6.3A	4.0mm² feed through terminal (3 screw clamps) (Blue)	1SNA125468R2200
M4/6.3A.P	4.0mm² feed through terminal, (3 screw clamps) Ground (Green/Yellow)	1SNA195637R1200
M4/6.3A.1	4.0mm² feed through terminal with partition (3 screw clamps) (Grey)	1SNA115483R0000
M4/6.4A	4.0mm² feed through terminal (4 screw clamps) (Grey)	1SNA115479R2300
M4/6.4A	4.0mm² feed through terminal (4 screw clamps) (Blue)	1SNA125479R2500
M4/6.4A.P	4.0mm² feed through terminal, (4 screw clamps) Ground (Green/Yellow)	1SNA195638R2300
MS4/6	4.0mm² compact feed through terminal (Grey)	1SNA115265R2400

Accessories



FEM6	End section 2.5mm² - 10mm² (Grey)	1SNA118368R1600
FEM6	End section 2.5mm² - 10mm² (Blue)	1SNA128368R1000
FEM6	End section 2.5mm² - 10mm² (Yellow)	1SNA103062R2100
FEM6	End section 2.5mm² - 10mm² (Green)	1SNA103125R1500
FEM6	End section 2.5mm² - 10mm² (Orange)	1SNA103126R1600
FEM6	End section 2.5mm² - 10mm² (White)	1SNA103312R2000
FEM6 V0	End section 2.5mm² - 10mm² (Beige) V0	1SNA198368R1700
FEM3A	End section for M4/6.3A Series (Grey)	1SNA116576R1500
FEM3AP	End section for M4/6.3A.P (Green)	1SNA199876R2600
FEM4A	End section for M4/6.4A (Grey)	1SNA116629R2200
FEM4AP	End section for M4/6.4A.P (Green)	1SNA199879R0100

Accessories

Type	Description	Product Hierarchy 300008 Order Code
FEMS6	Compact end section for MS4/6 (Grey)	1SNA113885R0100
FEM6C	Circuit separator 2.5mm² - 10mm² (Grey) snaps onto dinrail, for CPM cover	1SNA114777R2400
SCMA5	Circuit separator 2.5mm² - 10mm² (Grey) fits into top of terminal	1SNA116728R2500
SCF6	Separator end section 2.5mm² - 10mm² (Grey) for CPM cover	1SNA118707R0300
SCF61	Separator end section 2.5mm² - 10mm² (Grey)	1SNA114202R2500
SCFM6	Separator end section 2.5mm² - 10mm² (Grey) snaps onto Din rail, for CPM cover	1SNA114825R0500
SCFCV1-2	Separator end section (Grey) for CPV cover	1SNA116795R1100
BJMI6	Jumper bar - 2 pole (IP20)	1SNA176663R0000
BJMI6	Jumper bar - 3 pole (IP20)	1SNA176664R0100
BJMI6	Jumper bar - 4 pole (IP20)	1SNA176665R0200
BJMI6	Jumper bar - 5 pole (IP20)	1SNA176666R0300
BJMI6	Jumper bar - 10 pole (IP20)	1SNA176667R0400
EL6	Connector plate for linking two jumper bars together	1SNA173627R2100
PC6	Comb jumper bar - 2 pole for MS4/6 compact terminal	1SNA113546R1400
PC6	Comb jumper bar - 10 pole for MS4/6 compact terminal	1SNA113548R2600
EIP	Insulating tip for comb jumper bar	1SNA113550R2400
CPM	Protective cover (Clear) 0.5 metres	1SNA187312R1400